

Unzen Jigoku Map



Explore the treasure trove of history, Unzen! Take a stroll along the Jigoku Trail and visit the historical sites of Unzen!

Capture the QR code with your smartphone for an audio guide on the history and nature of Unzen! →



You can access it anytime, anywhere on your iPhone (smartphone) for "free"

- A** Vistor Center1 (Nature)
- B** Unzen Jigoku vegetation
- C** Vistor Center2 (History)
- D** Sanzu River
- E** Daikyokan Jigoku
- F** Kukai (Great Monk)statue
- G** Headless buddha statue
- H** Observatory
- I** Machiko Rock
- J** Oito Jigoku
- K** Suzume Jigoku
- L** Saino kawara
- M** Manmyoji History (Stone monument)
- N** Goldren Buddha statue
- O** 88 Buddha statue Tour (about 15 minutes On foot)



N Goldren Buddha statue



O 88 Buddha statue Tour

Pray for family health and safety

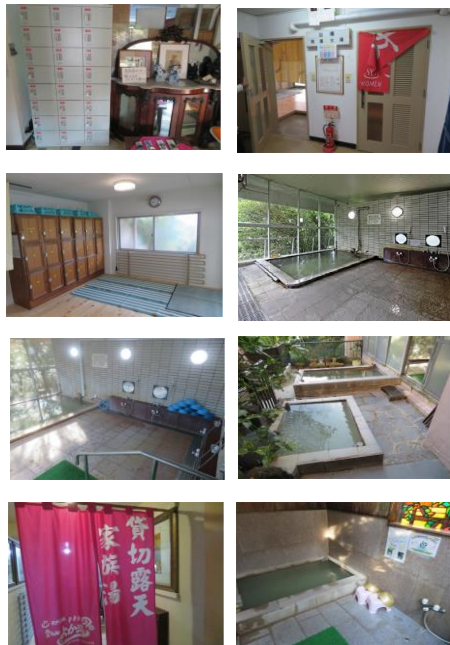
A Shinyu Public Spa •Regular holiday:Wednesday
 •Hours:9:00~22:00 •Chage:Adult ¥200 Children: ¥100
 •Location: About 200m from UnzenVisitorCenter.Toward the hotel "Yuyado Shinyu" and turn left for 20m.



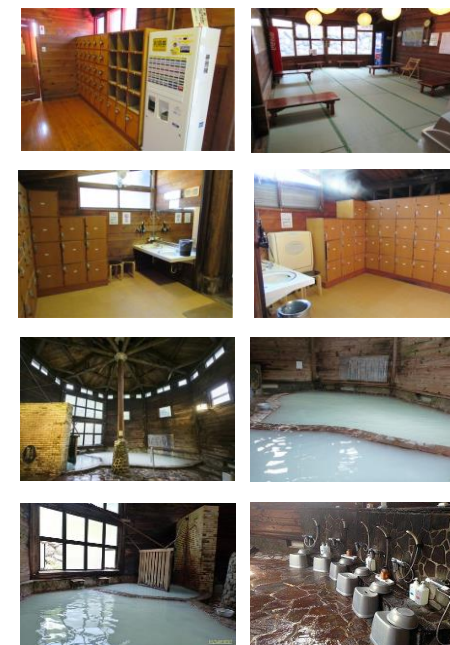
C Yunosatu Public Spa •Regular holiday:Tuesday
 •Hours:9:00~22:00 •Chage:Adult ¥200 Children: ¥100
 •Location: From Unzen Visitor Center, Toward Shimabara, and turn left toward Chijiishi-cho in front of Hotel Toyokan. Then turn left after about 60m



B Unzen Yokayu Spa •Regr holiday:Thursday
 •Hours:10:00~20:00
 •Chage:Adult ¥450 Children: ¥230
 •Location: About 500m from the Unzen Visitor Center toward Obama •Facilities: family Spa, open-air Spa



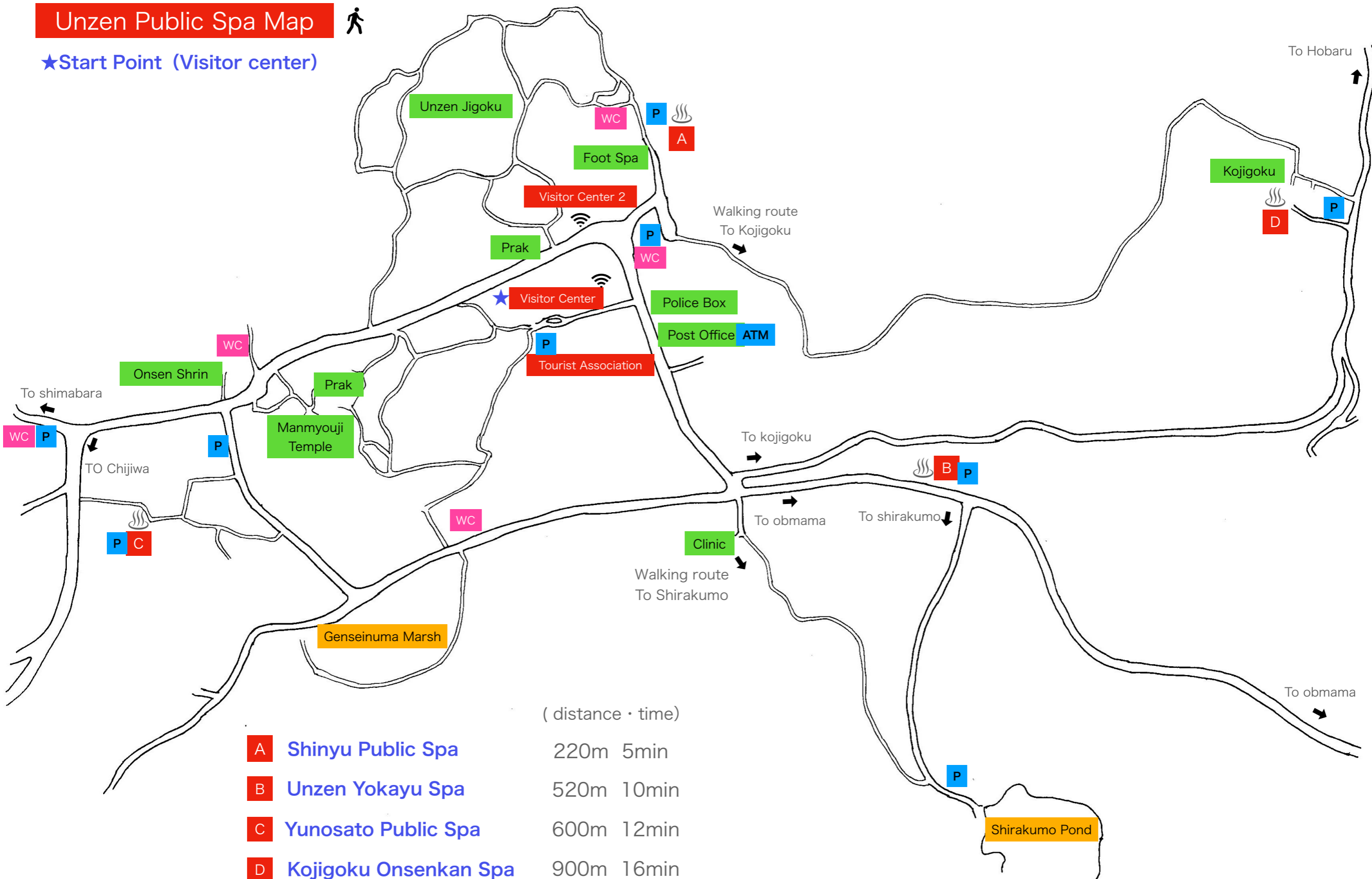
D Kojigoku Onsenkan Spa •Regular holiday:No holiday
 •Hours:9:30~19:00 •Chage:Adult ¥500 Children: ¥250
 •Location: From Unzen Visitor Center, go 300m towards Obama-cho, turn left and go 500m towards Kojigoku district.



Unzen Public Spa Map



★Start Point (Visitor center)



(distance · time)

A	Shinyu Public Spa	220m	5min
B	Unzen Yokayu Spa	520m	10min
C	Yunosato Public Spa	600m	12min
D	Kojigoku Onsenkan Spa	900m	16min

Vistor Center ~ Sirakumo Pond ~ Mt, Kinugasa

about 15 minutes

about 30 minutes

Mt.Kinugasa has been cherished as a scenic hiking trail with magnificent views from the summit. During the late Meiji to Taisho period, many foreigners climbed the mountain and enjoyed its stunning sunset, which led to it being called 'Sunset Hill.' In the 'Unzen National Park,' we have three promises: 'Do not take, do not break, do not discard!' This area is home to precious plants, birds, and insects. Let's cherish it together as a gift to future generations."

Mt,Kunimi · Mt,Fugen · Mt,HeiseiSinzan · Mt,nodake



Mt. Kinugasa (870m)

From the mountaintop, view the townscape of the Unzen town: red roofs and white exteriors.

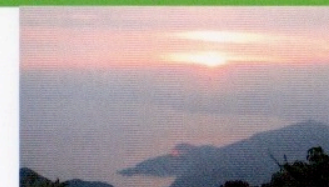
Sirakumo Pond (715m)

Shirakumo Pond: Autumn foliage in mid-November.



Distant view: Mt,Fugen and Mt,Heisei Shinzan.

Vegetation on Mt.Kinugasa: In the past, the area around Mt.Kinugasa and Shirakumo Pond was used for sheep grazing, creating grassy meadows with plants such as Miyamakirishima, Sasa (bamboo grass), and Shiba (miscanthus). However, grazing was gradually discontinued, and the trees started to grow, transforming the area into the present-day forest.



From the summit of Mt,Kinugasa, enjoy the sunset over Chichiwa Bay.

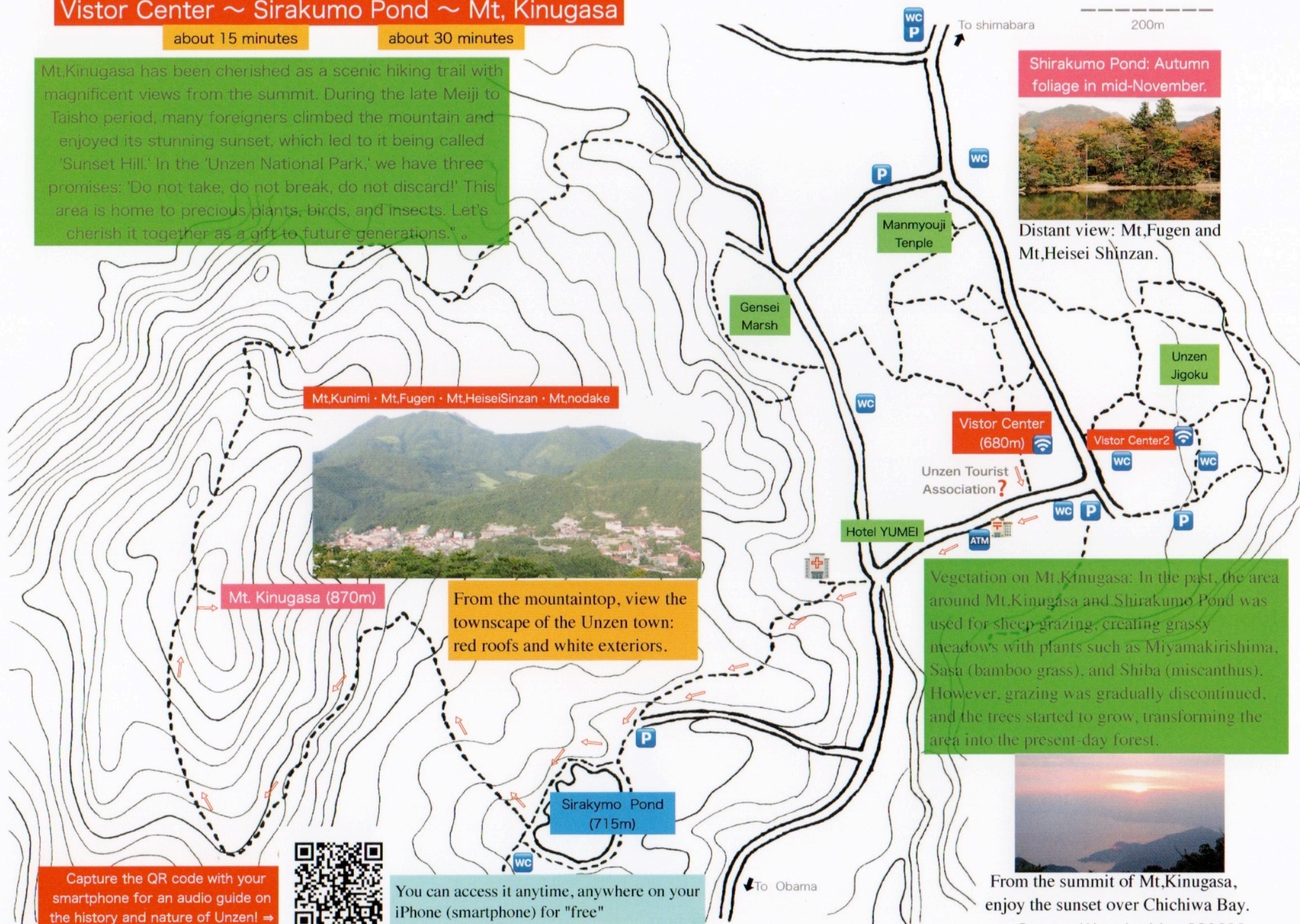
Creator West by Mac 220611

Capture the QR code with your smartphone for an audio guide on the history and nature of Unzen! =>



You can access it anytime, anywhere on your iPhone (smartphone) for "free"

To Obama



UnzenTown~Nita pass by Car



☆ If you are going by private car (approximately 15 minutes)

- 1, From Unzen town, proceed on National Route 57 towards Shimabara.
- 2, Continue straight past the golf course junction (Right turn leads to Shimabara).
- 3, Take the one-way straight Nita Bypass Road.

☆ If you are using a taxi



- Phone: Heisei Kanko Taxi (0957-73-2010)
- One way: Upward 3,500 yen, Downward: 4,000 yen
- Round trip: 8,500 yen (Waiting Time NitaPass)

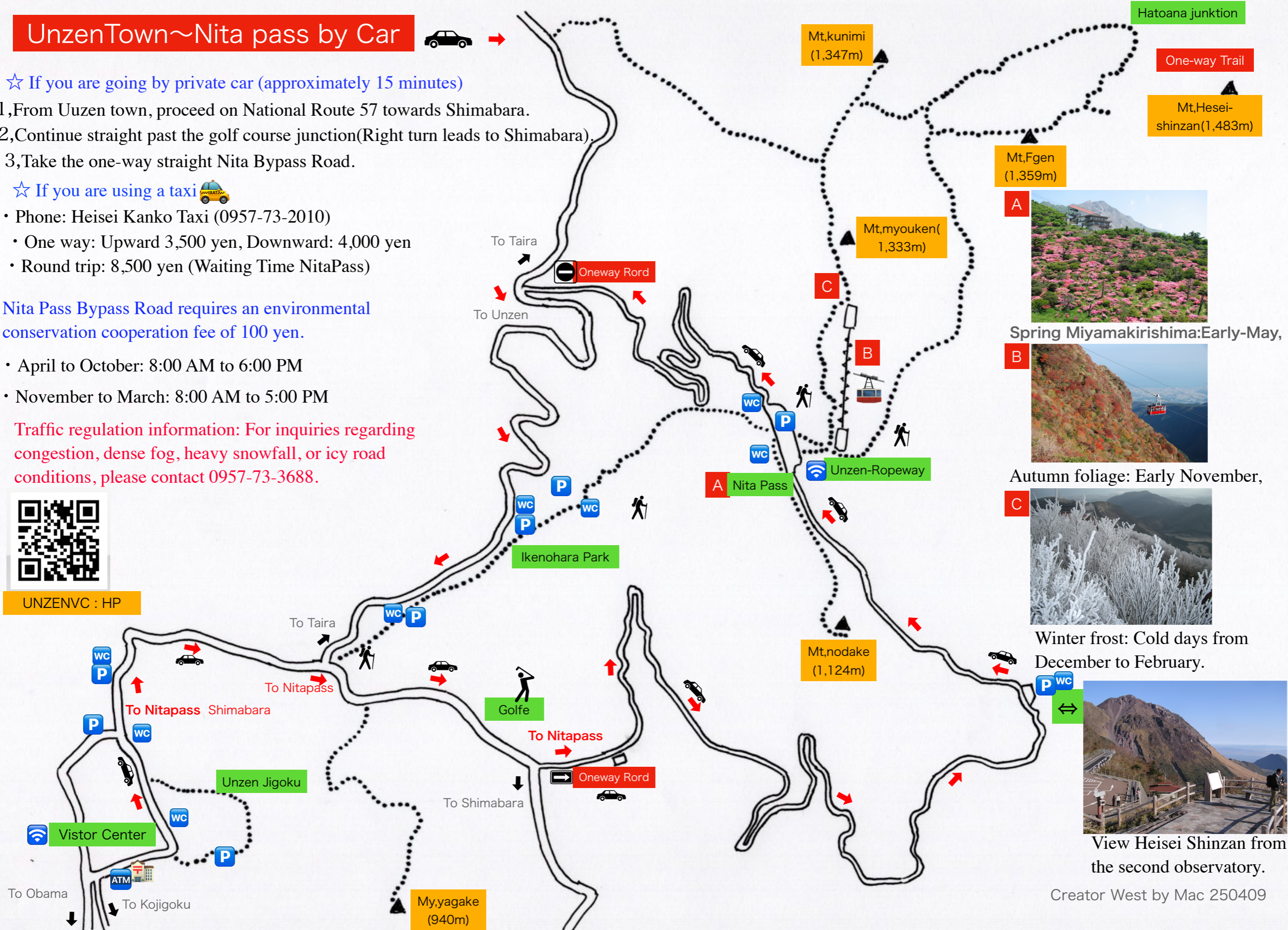
Nita Pass Bypass Road requires an environmental conservation cooperation fee of 100 yen.

- April to October: 8:00 AM to 6:00 PM
- November to March: 8:00 AM to 5:00 PM

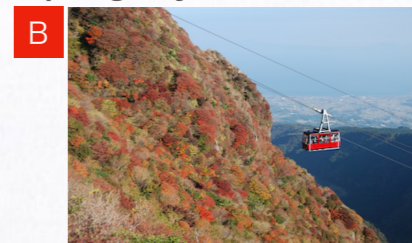
Traffic regulation information: For inquiries regarding congestion, dense fog, heavy snowfall, or icy road conditions, please contact 0957-73-3688.



UNZENVC : HP



Spring Miyamakirishima: Early-May,



Autumn foliage: Early November,



Winter frost: Cold days from December to February.



View Heisei Shinzan from the second observatory.

Creator West by Mac 250409

Unzen Visitor Center~Nita Pass

A ~ B : 1200m 25min

(Walk on the Car Roadway) 人

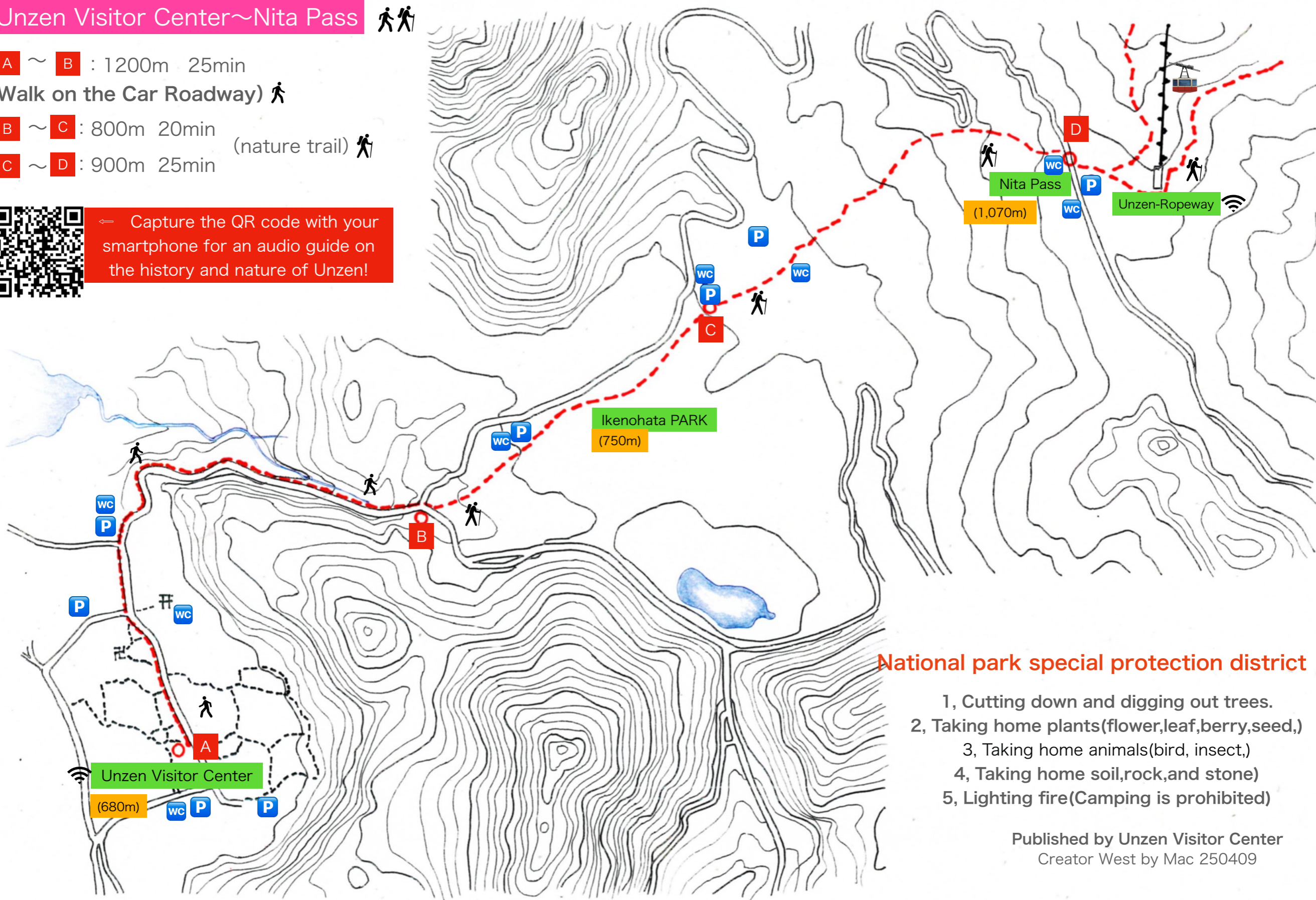
B ~ C : 800m 20min

(nature trail) 人

C ~ D : 900m 25min



← Capture the QR code with your smartphone for an audio guide on the history and nature of Unzen!



National park special protection district

- 1, Cutting down and digging out trees.
- 2, Taking home plants(flower,leaf,berry,seed,)
- 3, Taking home animals(bird, insect,)
- 4, Taking home soil,rock,and stone)
- 5, Lighting fire(Camping is prohibited)

Published by Unzen Visitor Center
Creator West by Mac 250409



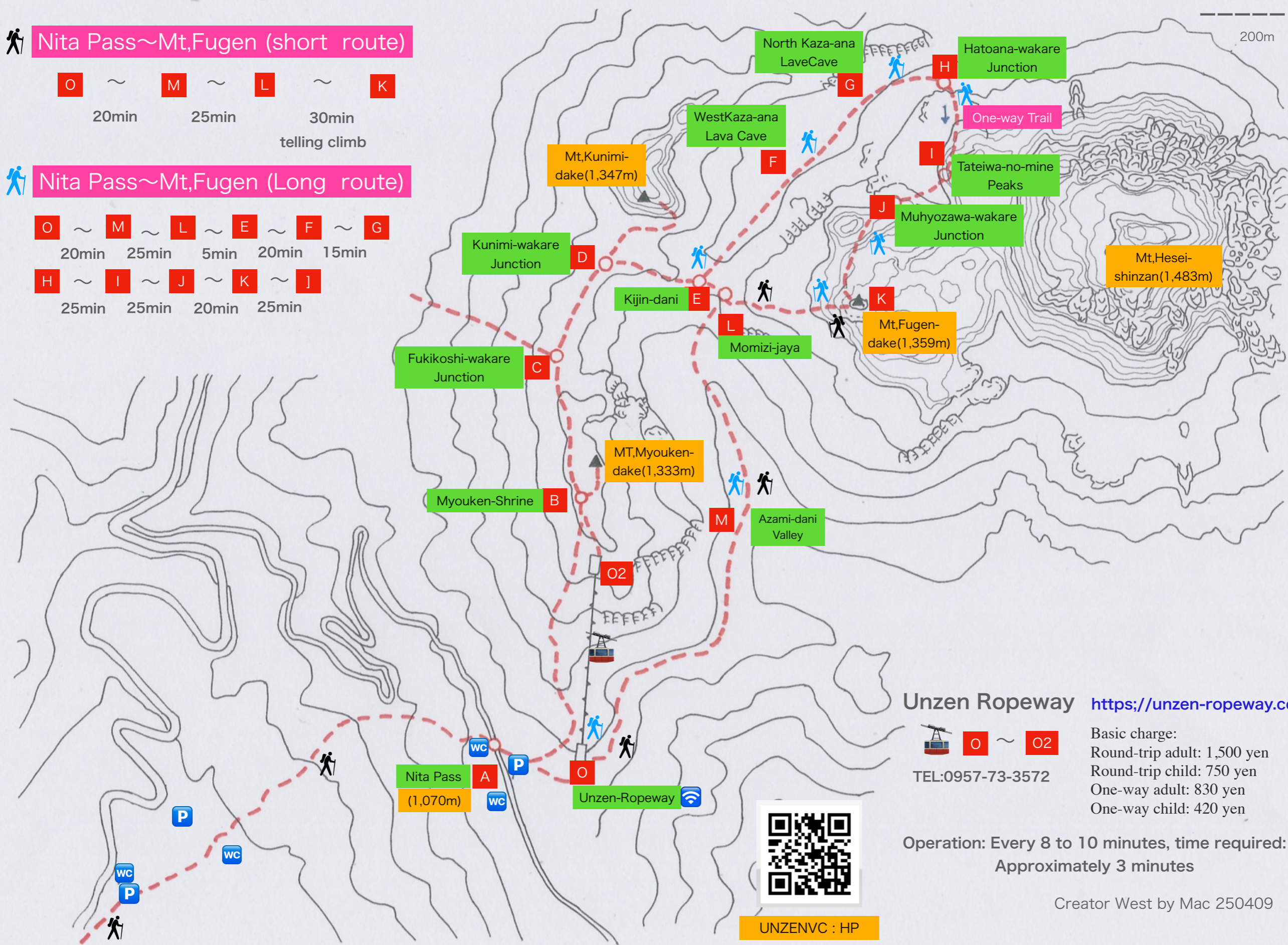
Nita Pass~Mt,Fugen (short route)

O ~ M ~ L ~ K
20min ~ 25min ~ 30min
telling climb



Nita Pass~Mt,Fugen (Long route)

O ~ M ~ L ~ E ~ F ~ G
20min ~ 25min ~ 5min ~ 20min ~ 15min
H ~ I ~ J ~ K ~ J
25min ~ 25min ~ 20min ~ 25min



Unzen Ropeway <https://unzen-ropeway.com>



O ~ O2

TEL:0957-73-3572

Basic charge:

Round-trip adult: 1,500 yen

Round-trip child: 750 yen

One-way adult: 830 yen

One-way child: 420 yen

Operation: Every 8 to 10 minutes, time required:
Approximately 3 minutes



UNZENVC : HP

Creator West by Mac 250409

Unzen history walking

Approximately
3-hour course



Sanko
no Matu



Issaikuou
Waterfall



Big Rock
tunnel"



Tiondou



One-Legged
Torii



temizuya



Oni rock

Unzen Visitor Center ~ Issaikuou Fall course

- A ~ B 970m 15min
- B ~ C 530m 10min
- C ~ D 290m 10min
- D ~ E 430m 15min
- E ~ F 430m 15min

(Estimated distance and time)

温泉山・島原半島史跡



Enjoy a pleasant nature walk along the Unzen trails, while visiting the historical sites of Unzen!

←A detailed explanation above, scan the QR code with your smartphone!

★Google Map : Explanation, image, pinpoint location

The ' SankoPine' is a precious and rare pine leaf that serves as a talisman in Mount Koya, known in the legend of the esteemed monk Kukai



- F ~ G 1000m 20min
- G ~ H 430m 15min
- H ~ I 320m 10min
- I ~ A 130m 5min

(Estimated distance and time)

編集・発行：自然公園財団雲仙支部

Creator West by Mac 231026

Amidst the comfortable environment of Unzen National Park, take a walk through the 'Treasury of History: Unzen' and enjoy the profound natural beauty and rich history of Unzen!"



C Sanko no Matu



B Route entrance to the Issaikuou Waterfall.



D Issaikuou Waterfall



Crawling through a giant rock womb



E Tiondou



F One-Legged Torii



Shirakumo Pond



G temizuya



I Oni rock

Unzen history walking

Approximately
2-hour course

Unzen VC



Manmyoji Temple



park located above Manmyoji



Daikokuten Cliff Carvings

Unzen Visitor Center ~ Daikokuten course

A ~ B 300m 10min

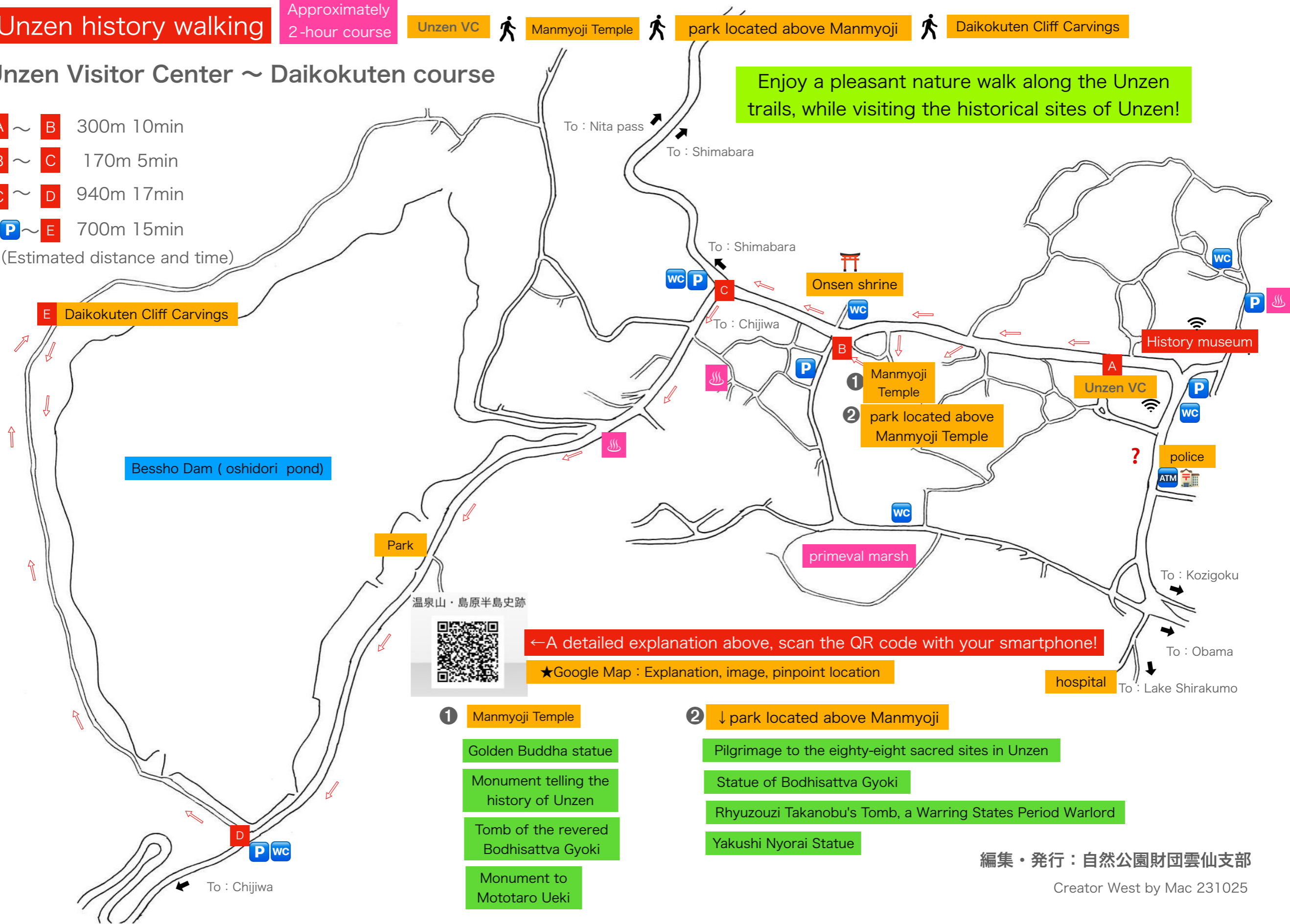
B ~ C 170m 5min

C ~ D 940m 17min

D ~ E 700m 15min

(Estimated distance and time)

Enjoy a pleasant nature walk along the Unzen trails, while visiting the historical sites of Unzen!



←A detailed explanation above, scan the QR code with your smartphone!

★Google Map : Explanation, image, pinpoint location

1 Manmyoji Temple

Golden Buddha statue

Monument telling the history of Unzen

Tomb of the revered Bodhisattva Gyoki

Monument to Mototaro Ueki

2 ↓ park located above Manmyoji

Pilgrimage to the eighty-eight sacred sites in Unzen

Statue of Bodhisattva Gyoki

Rhyuzouzi Takanobu's Tomb, a Warring States Period Warlord

Yakushi Nyorai Statue

編集・発行：自然公園財団雲仙支部

Creator West by Mac 231025

Amidst the comfortable environment of Unzen National Park, take a walk through the 'Treasury of History: Unzen' and enjoy the profound natural beauty and rich history of Unzen!"



1 Great Buddha Hall



1 Big Golden Buddha statue



2 Entrance to the Unzen 88 Temple Pilgrimage



2 Mini Shikoku 88 Temple Pilgrimage, Unzen Edition



2 Yakushi Nyorai



2 Supreme Buddha who cures illnesses



2 Statue of Bodhisattva Gyoki



E Daikokuten carved on a large rock



E Daikokuten cliff Buddha, prayer for business prosperity